



The Lodge, 11 Kirk Lane,
Ruddington, NG11 6NN

The Lodge, 11 Kirk Lane, Ruddington, NG11 6NN

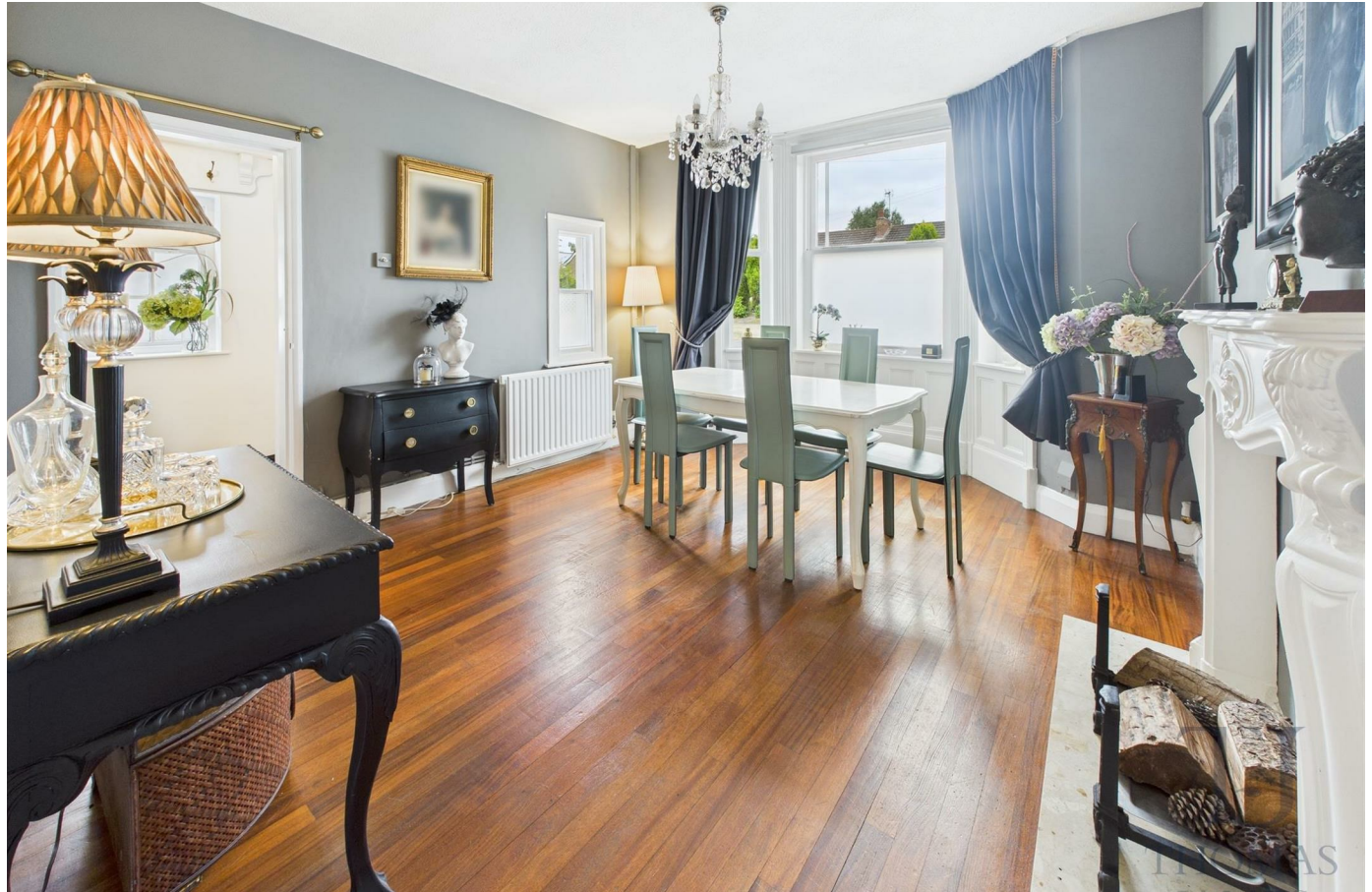
This characterful detached period home offers beautifully presented accommodation arranged over two floors, showcasing spacious rooms and high ceilings throughout. The ground floor features an inviting entrance hallway, a bright dual-aspect living room, a separate dining room, and a well-appointed kitchen. Upstairs, the first floor landing leads to two generously sized bedrooms and a tastefully fitted bathroom.

The property, which benefits from gas central heating, also boasts an attractive, low-maintenance rear garden—perfect for relaxing or entertaining. It has also recently benefitted from a brand new roof.

Enjoying a favourable location within the highly regarded South Nottinghamshire village of Ruddington, the home is just a short distance from a wealth of local amenities including shops, churches, a doctor's surgery, restaurants, and a beautiful country park. Excellent transport links and main road routes provide convenient access to Nottingham, Leicester, and neighbouring villages.

Early viewing is highly recommended to fully appreciate all this charming home has to offer.

Guide Price £325,000





ACCOMMODATION

The wooden entrance door opens to the entrance hallway. The entrance hallway has a single glazed window to the side, a radiator, a ceiling light point, and gives access to the dining room.

The dining room has a single glazed bay window to the front, a further single glazed window to the side, a ceiling light point, a radiator, stairs rising to the first floor, an under stairs storage cupboard, original wooden flooring, a feature fireplace with a marble hearth, and gives access to the living room, and the kitchen.

The dual aspect living room has single glazed windows to the front and rear, a radiator, a ceiling light point and two wall light points, and a feature fireplace with a tiled hearth and a decorative surround.

The kitchen has a range of wall and base units, tiled splash backs and square edge work surfaces, a sink with a mixer tap over, space and plumbing for both a washing machine and a dishwasher, space for a fridge/freezer, and space for a cooker. There is a double glazed window to the side, a ceiling light point, a radiator, wooden effect vinyl floor covering, and a double glazed door opening to the rear.

On reaching the first floor, the landing has a ceiling light point, and gives access to both bedrooms, and the bathroom.

Bedroom one has windows to the front and side, a ceiling light point, and a radiator.

Bedroom two has a window to the front, a ceiling light point, and a radiator.

Completing the accommodation, the large bathroom is fitted with a bath with a mains fed shower over, a wash hand basin, and a wc. There is a window to the side, vanity and storage cupboards, a radiator, a heated towel rail, two wall mounted lights, an over stairs storage cupboard, and wooden effect vinyl flooring.

OUTSIDE

At the rear of the property there is an attractive low maintenance courtyard garden, laid to a slabbed patio seating area, with shrub borders. Accessed via a gate from a shared pathway, the garden is fully enclosed, and also houses two external storage cupboards.

Council Tax Band

Council Tax Band D. Rushcliffe Borough Council.

Amount Payable 2025/2026 £2,579.65.

Referral Arrangement Note

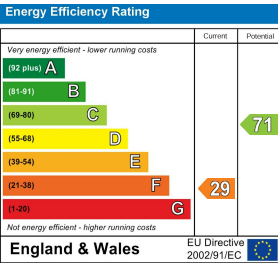
Thomas James Estate Agents always refer sellers (and will offer to refer buyers) to Premier Property Lawyers, Ives & Co, and Curtis & Parkinson for conveyancing services (as above). It is your decision as to whether or not you choose to deal with these conveyancers. Should you decide to use the conveyancers named above, you should know that Thomas James Estate Agents would receive a referral fee of between £120 and £240 including VAT from them, for recommending you to them.

DISCLAIMER NOTES

These sales particulars have been prepared by Thomas James Estate Agents on the instruction of the vendor. Services, equipment and fittings mentioned in these particulars have NOT been tested, and as such, no warranties can be given. Prospective purchasers are advised to make their own enquiries regarding such matters. These sales particulars are produced in good faith and are not intended to form part of a contract. Whilst Thomas James Estate Agents have taken care in obtaining internal measurements, they should only be regarded as approximate.

MONEY LAUNDERING

Under the Protecting Against Money Laundering and the Proceeds of Crime Act 2002, Thomas James require any successful purchasers proceeding with a purchase to provide two forms of identification i.e passport or photocard driving license and a recent utility bill. This evidence will be required prior to Thomas James instructing solicitors in the purchase or the sale of a property.



Thomas James Estate Agents, 20 High Street, Ruddington, Nottinghamshire, NG11 6EH

Tel: 0115 9844660 | Email: ruddington@tjea.com | Web: www.tjea.com

These particulars, whilst believed to be accurate are set out as a general outline only for guidance and do not constitute any part of an offer or contract. Intending purchasers should not rely on them as statements of representation of fact, but must satisfy themselves by inspection or otherwise as to their accuracy. No person in this firm's employment has the authority to make or give any representation or warranty in respect of the property.

